

VIEW ONLINE 

colliers.com/p-USA1080342

6,720 SF
Available

5,080 SF
Available



ST. ANDREWS ROAD (22,700 VPD)



Contact brokers
for lease rates!

Contact us:

Rox Pollard

Vice President & Director
of Retail Services
+1 803 401 4242
rox.pollard@colliers.com

Danny Bonds

Senior Brokerage Associate
+1 803 401 4280
danny.bonds@colliers.com

FOR LEASE | 533-581 St. Andrews Road, Columbia | SC

±5,080 to ±6,720 SF Retail Space Available at Richardson

Richardson Plaza is located on the bustling St. Andrews Road in Columbia, SC. Its location is in close proximity to I-26 and I-20. The plaza is anchored by IGA, Goodwill and Harbor Freight Tools.

Colliers International
1301 Gervais St., Ste. 600
Columbia, SC 29201
+1 803 254 2300



Accelerating success.



VIEW ONLINE 

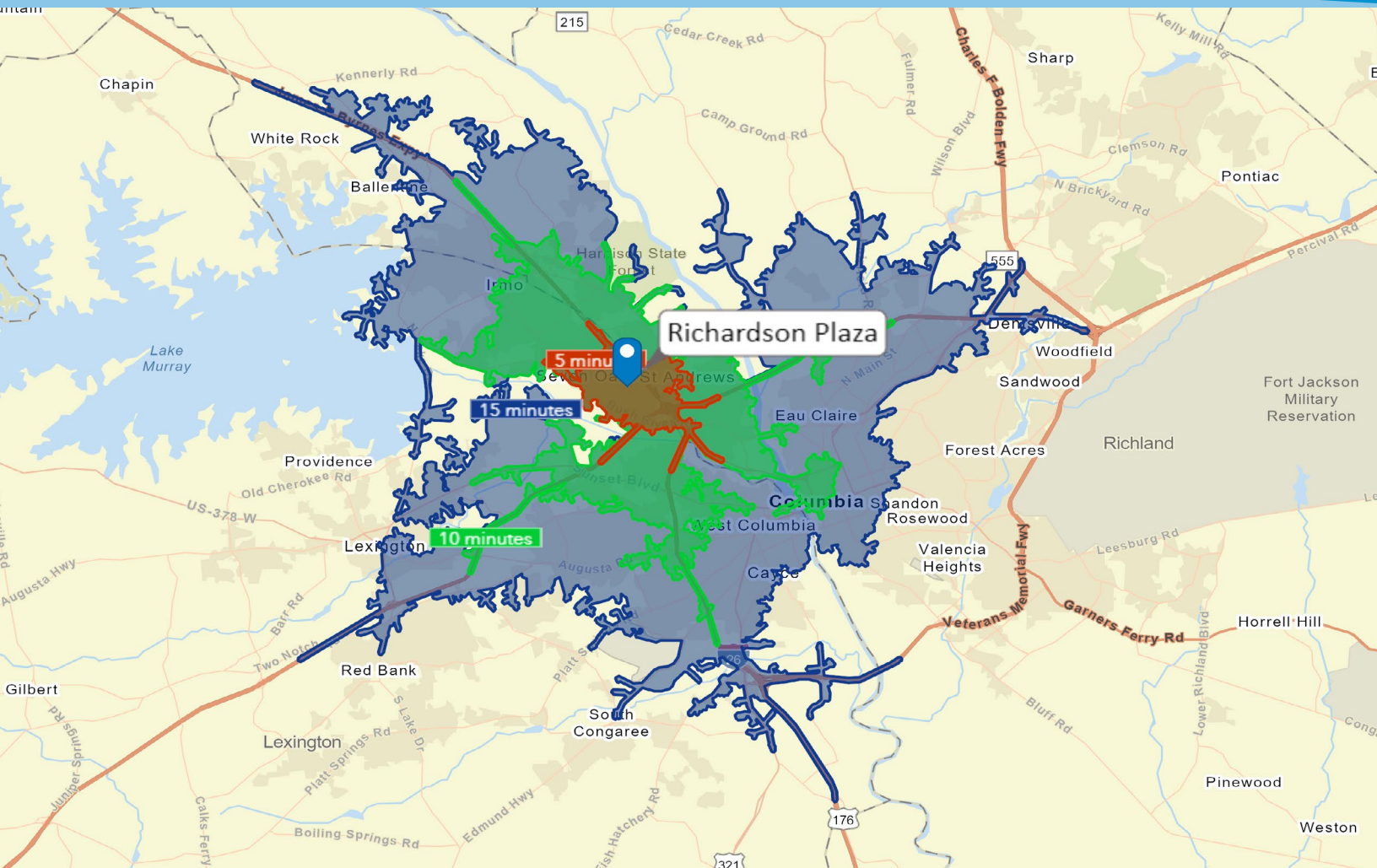
colliers.com/p-USA1080342



Demographics

5-10-15 MINUTE DRIVE TIMES

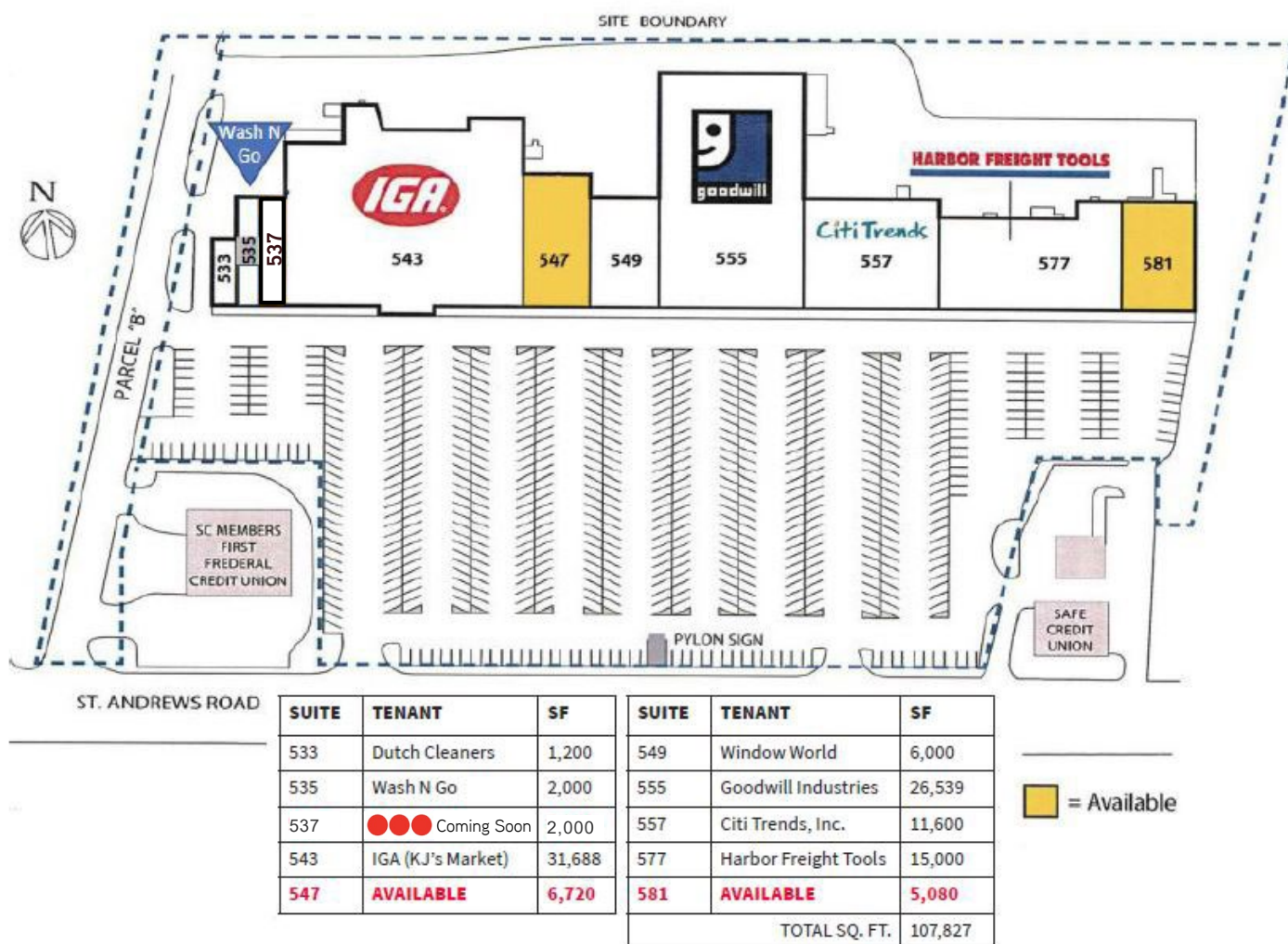
	5 MIN	10 MIN	15 MIN
POPULATION			
2020 Population	16,499	71,699	225,755
2025 Projected Population	17,344	75,027	238,033
HOUSEHOLDS			
2020 Households	7,337	32,575	91,557
2025 Projected Households	7,680	34,064	96,707
INCOME			
2020 Average Houshold Income	\$57,606	\$63,328	\$66,900
2025 Project Average Income	\$61,930	\$68,768	\$73,329
BUSINESS			
Total Businesses (2020)	798	4,384	10,917
Total Employees (2020)	9,343	64,366	157,955



Available Space

Suite 547 **6,720 SF**

Suite 581 **5,080 SF**



Contact us:

ROX POLLARD

Vice President & Director of Retail Services
+1 803 401 4242
rox.pollard@colliers.com

DANNY BONDS

Senior Brokerage Associate
+1 803 401 4280
danny.bonds@colliers.com